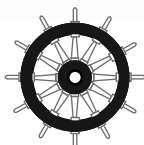


Marine Radar

JMR-5400 Series



Dramatically improved short-range detection

- Meets the newest IMO radar standards and has MED certification.
- Short-range target detection clearly displays small oceanic targets.
- Makes the movements of other ships clear and easily detected.
- Operating environment is easily customized to suit the user's needs.



Japan Radio Co., Ltd.

IMO-compliant and MED-certified marine radar.*1

*1: Cat. 2 certification.

The JMR-5400 series is equipped with a top-of-the-line processor, remarkably improving target detection and drawing performance a like. Also, in addition to the newly developed and highly sensitive radar antenna, an 8ft S band solid-state radar antenna is also available.

High-resolution display with 1,000 cd/m² brightness*2

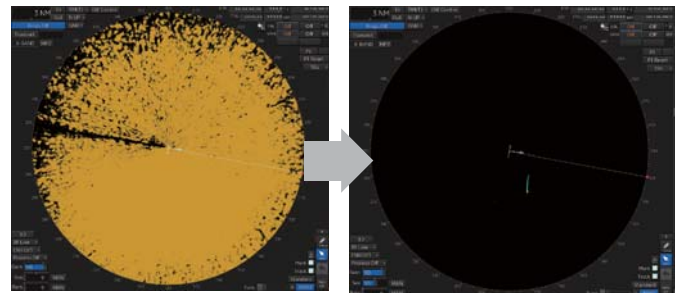
*2: 19-inch model only.



The newest signal processing technology with highly refined image display.

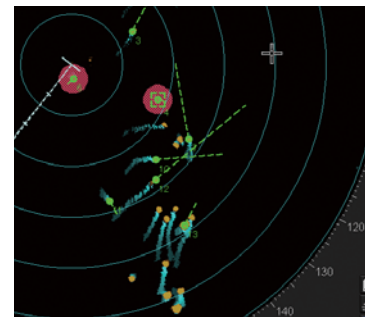
Short-range target detection and clutter removal functionality.

Small oceanic targets that were previously difficult to detect are displayed crisply and clearly. Automatic clutter removal and optimized technology has dramatically improved detection capabilities, and also allows the positions of other ships to be displayed clearly.



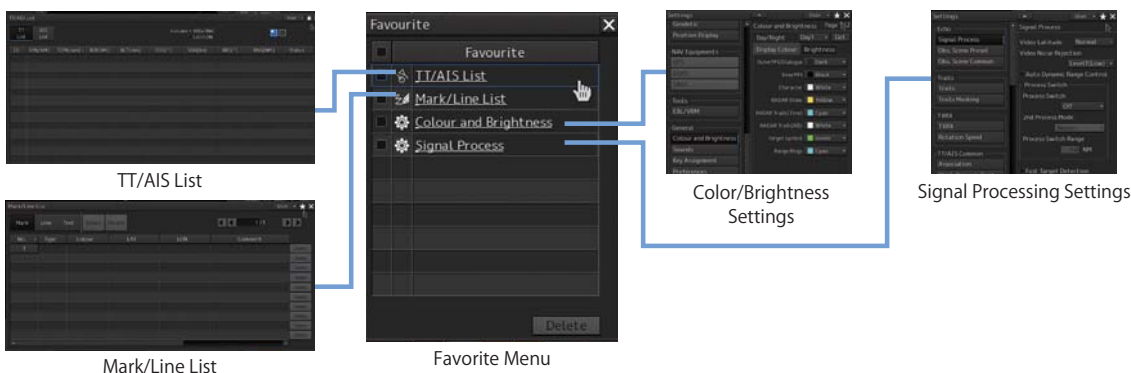
TT/AIS display functionality

Equipped with TT functionality by default, allowing users to mark other ships and points of interest with TT symbols and check the course of nearby objects at a glance. The same highlighting functionality is also available for AIS symbols.



Original Menu

Create original menus that include only the items you need, and a favorites list to bring up frequently used items in one location.



Remote Maintenance System (RMS)-compatible

The JMR-5400 series is compatible with JRC's proprietary Remote Maintenance System (RMS), which uses JRC's VDR and satellite communications to remotely link to the equipment onboard the vessel to perform remote diagnostics and preventive maintenance. For more information on RMS, please contact JRC's business department.

Radar antennas with exceptionally reliable target detection capabilities.



S band - 8ft 250W solid-state radar antenna

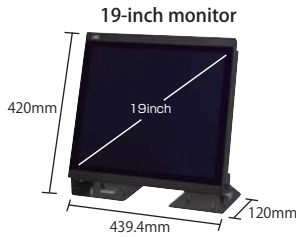
Further miniaturization provides even greater mountability.



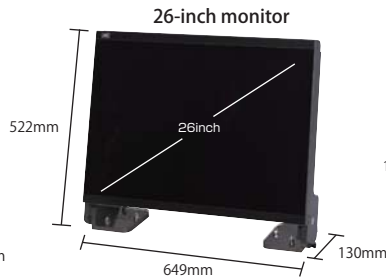
New Radar Antenna

A newly tuned system cuts search times to roughly 1/4th of what they were previously. Additionally, thinning of the antenna height means improved drive device reliability.

Display units



NWZ-214 Weight : 4.6kg
4.9kg(AC option)



NWZ-208 Weight : 16kg

Processor



NDC-1678 Weight : 7.1kg

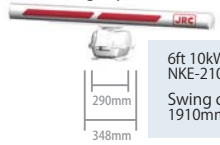
Keyboard



NCE-5794 (Standard keyboard) Weight : 2.0kg

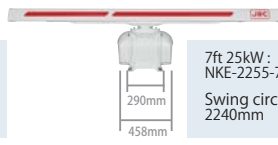
Scanners

10kW X-band scanner
[High speed]



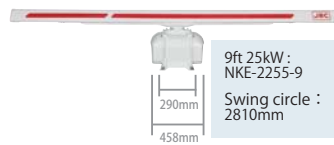
6ft 10kW :
NKE-2103-6/HS
Swing circle :
1910mm

25kW X-band scanner



7ft 25kW :
NKE-2255-7
Swing circle :
2240mm

25kW X-band scanner



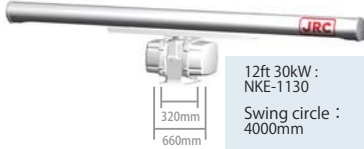
9ft 25kW :
NKE-2255-9
Swing circle :
2810mm

25kW X-band scanner



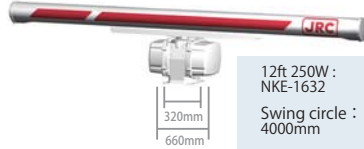
6ft 25kW :
NKE-2255-6HS
Swing circle :
1880mm

30kW S-band scanner (2 unit)



12ft 30kW :
NKE-1130
Swing circle :
4000mm

250W S-band solid-state scanner



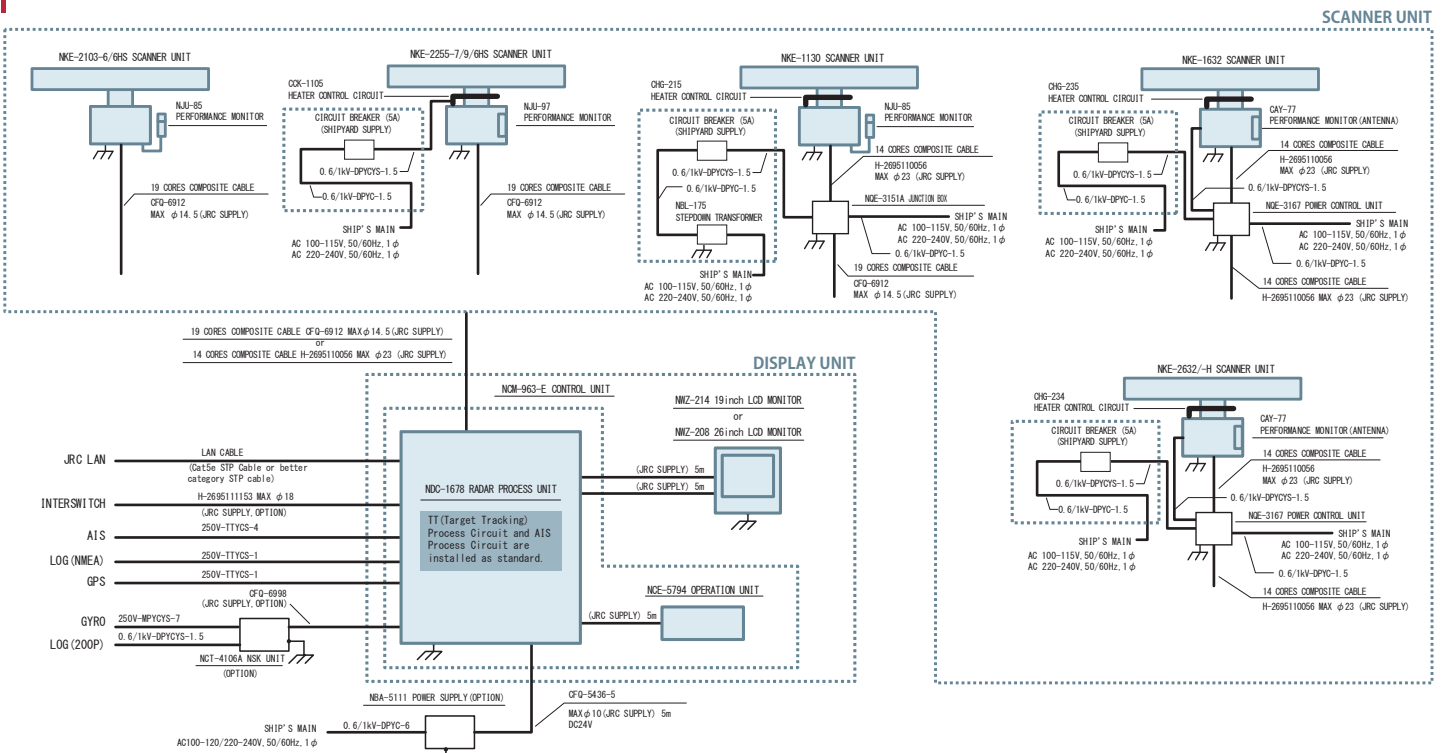
12ft 250W :
NKE-1632
Swing circle :
4000mm

250W S-band solid-state scanner
[High speed]



8ft 250W :
NKE-2632/H
Swing circle :
2770mm

Diagram



Specifications

Model	JMR-5410-6X	JMR-5410-6XH	JMR-5425-7X	JMR-5425-9X	JMR-5425-6XH	JMR-5430-S	JMR-5472-S	JMR-5482-S	JMR-5482-SH
Display	colour raster scan PPI								
Range scale	0.125/0.25/0.5/0.75/1.5/3/6/12/24/48/96NM								
Scanners									
Model	NKE-2103-6/HS		NKE-2255-7	NKE-2255-9	NKE-2255-6HS	NKE-1130	NKE-1632*1	NKE-2632/-H*1	
Transmitting power	10kW		25kW			30kW	250W		
Transmitting frequency	9410MHz±30MHz		9410MHz±30MHz			3050MHz±20MHz	PON:3035MHz, QON:3065MHz±4MHz or 3060MHz±4MHz		
Antenna length	6ft		7ft	9ft	6ft	12ft	12ft	8ft	8ft
Rotation speed	27rpm	48rpm	24rpm	24rpm	48rpm	24rpm	24rpm	24rpm	48rpm
Horizontal beam width	1.2°		1.0°	0.8°	1.2°	1.9°	1.9°	2.7°	2.7°
Vertical beam width	20°		20°	20°	20°	25°	25°	25°	25°
Weight	36kg		52kg	55kg	50kg	180kg	160kg	85kg	90kg
Pulse width	0.08 μs/2250Hz 0.25 μs/1700Hz 0.5 μs/1200Hz 0.8 μs/750Hz 1.0 μs/650Hz		0.07 μs/2250Hz, 0.2 μs/2250Hz 0.3 μs/1900Hz, 0.4 μs/1400Hz 0.8 μs/750Hz, 1.0 μs/650Hz 1.2 μs/510Hz			0.07 μs/(4.6 μs, 8MHz)/1860Hz or 2280Hz 0.14 μs/(9.1 μs, 8MHz)/1860Hz or 2280Hz 0.29 μs/(9.1 μs, 8MHz)/1860Hz or 2280Hz 0.57 μs/(9.1 μs, 8MHz)/1280Hz 1.14 μs/(18.3 μs, 8MHz)/640Hz			
Duplexer	circular + diode limiter								
Tuning	automatic / manual								
Ambient condition	temperature : -25°C~+55°C relative humidity : 93%@ 40°C								
Processor									
Model	NDC-1678								
Bearing indication	RM display : north-up / course-up / head-up TM display : north-up / course-up								
Presentation mode	RM display with true trail, RM display with relative trail, TM display								
EBL	2 (EBL1/EBL2) (center/independent) 000.0° - 359.9°, digital display								
VRM	2 (VRM1/VRM2) 0.000 ~ 96.0NM, digital display								
Trail indication	off/0.25/0.5/1/3/6/10/15/30/60-min								
Display									
Model	NWZ-214 (19-inch) /NWZ-208 (26-inch)								
LCD	1280×1024 dot (SXGA) (19-inch) /1920×1200 dot (WUXGA) (26-inch)								
PPI Effective diameter	≥250mm								
Connection cable	5m (processor-monitor)								
Number of TT tracking targets	30 targets max. (expanding to a maximum 100 targets with an optional function added)								
TT Tracking Range	Auto/Manual 32 NM max.								
Number of AIS targets	180 targets max. (expanding to a maximum 1,000 targets with an optional function added)								
TT/AIS vector	True/Relative, variable from 1 to 120 minutes								
Keyboard									
Model	NCE-5794								
Connection cable	5m (processor-keyboard)								
Ambient conditions	Operating temperature: -15 to 55°C; Relative humidity: 93% @40°C (processor,display,keyboard)								
installation cable	CFQ-6912-20 length 20m (max length 65m)					CFQ-6912-20 length 20m 2695110056	2695110056		
Power supply(voltage)	DC21.6~36.0V					DC21.6~36.0V, AC100V~240V			
Power consumption (max wind)	NWZ-214 Max. 350W	NWZ-208 Max. 400W	Max. 400W	Max. 500W	Max. 450W	Max. 500W	Max. AC:1700VA/DC:200W	Max. AC:1300VA/DC:200W	Max. AC:1700VA/DC:200W
			Max. 450W	Max. 550W	Max. 500W	Max. AC:1700VA/DC:250W	Max. AC:1300VA/DC:250W	Max. AC:1700VA/DC:250W	
Option									
Trackball Operation Unit	NCE-5605				Monitor Stand		CWB-1660 (26-inch) /CWB-1659 (19-inch)		
Trackball Operation Unit Installation Cable	7ZCNA4152				Monitor Cover		CWB-1621 (26-inch) /CWB-1619 (19-inch)		
Keyboard Operation Unit	NCE-5625				Monitor Hood		CWB-1620 (26-inch) /CWB-1618 (19-inch)		
Junction Box	NQE-1143				Printer		Printer:7HPNA4003, L Type Stopper (Printer Fixture):QL-58		
Sensor LAN Switch Unit	NQA-2443				Operation Unit RS-422		10m:7ZCRD1746, 20m:7ZCRD1747, 30m:7ZCRD1748, 40m:7ZCRD1749, 50m:7ZCRD1750 (maximum length)		
Rectifier	NBA-5111				Extension Cable				
Interswitch Unit	NQE-3141-4A (4ch) /NQE-3141-8A (8ch)				NSK Unit		NCT-4106A		
Power Control Unit	NQE-3167				CMH-2370 Serial LAN Interface Circuit Spare Parts		7ZXNA4020		
Distributor for Remote Monitor	Video Distribution Amplifier:VAC-2001HB-A				7HPNA4003 Printer Spare Parts		7ZXNA4011		
Display Connection	Monitor Extension Kit:CQF-5957								

※ 1: NKE-1632,NKE-2632 scanner antennas: Transmission pulse width (1st)/(Transmission pulse with and frequency shift width (2nd))/Repetition frequency

• Specifications may be subject to change without notice.

For further information, contact:



Since 1915

Japan Radio Co., Ltd.

URL <http://www.jrc.co.jp/eng/>

Main Office: NAKANO CENTRAL PARK EAST
10-1, Nakano 4-chome, Nakano-ku, Tokyo
164-8570, Japan
Telephone: +81-3-6832-1816
Facsimile: +81-3-6832-1845

Overseas Branches : Athens, Manila

Liaison Offices : Taipei, Hanoi, New York

Overseas Subsidiaries : Shanghai, Rio de Janeiro, Jakarta
Rotterdam, Singapore, Houston

34EM

ISO9001, ISO14001 Certified